



A MEMBER SUPPORTED
NATIONAL BUICK CLUB

MECHANICAL TIPS

1938 ACCESSORIES

| | List Price |
|---|------------|
| Deluxe Heater | \$18.95 |
| Master Heater | 12.95 |
| Dual Windshield Defroster | 8.85 |
| Centerline Radio (Factory Installed, \$53.00) | 58.75 |
| Centerline Dual Radio (Factory Installed, \$70.75) | 67.50 |
| Centerline Radio In Rear Compartment (90L Limousine) | |
| Deluxe Moderne Seat Covers: | |
| Front Seat—Series 40 or 60 4 Door | 8.40 |
| Rear Seat—Series 40 4 Door | 5.55 |
| Front Seat—Series 60 4 Door | 5.55 |
| Rear Seat—Series 40 or 60 2 Door or Coupe | 8.40 |
| Front Seat—Series 40 or 60 2 Door | 6.55 |
| Front Seat—Series 80 or 90 Sedan | 10.50 |
| Rear Seat—Series 80 or 90 Sedan | 14.00 |
| Invisible Bug Screen | .85 |
| Twin Radiator Grille Covers | 1.35 |
| Center Grille Guard | 1.95 |

FACTORY INSTALLED SPECIAL ACCESSORIES

| | List Price |
|--|------------|
| Sol-Shifting Transmission | \$100.00 |
| Oil Bath Air Cleaner | 10.00 |
| Special Paint | 40.00 |
| Rear Compartment Watch (Models 80C, 81 and 87) | 15.00 |

SIX-WHEEL EQUIPMENT

| | List Price | |
|----------------------|---------------|---------|
| 2 Metal Tire Covers | 1 Extra Wheel | \$45.00 |
| 2 Tire Locks | 1 Extra Tube | \$45.00 |
| 2 Fender Walls | 1 Extra Tire | 60.00 |
| 2 Side Tire Carriers | | |

COLOR OPTIONS

| Color | Body Color | OPTION NO. 1—STANDARD ON ALL SERIES | OPTION NO. 2—SER. 40-60-80 ONLY |
|-----------------------|-------------------|-------------------------------------|---------------------------------|
| 515 Rambrod Black | Black | Stripes | Wheel Color |
| 516 Galatborough Blue | Galatborough Blue | Silver | Dante Red |
| 517 VanGogh Green | VanGogh Green | Silver | Dante Red |
| 518 Tildan Maroon | Tildan Maroon | Silver | Sevensley Green |
| 519 Boltcell Blue | Boltcell Blue | Silver | Dante Red |
| 520 Whalster Grey | Whalster Grey | Cartersel Red | Dante Red |
| 521 Homer Grey | Stanhope Blue | Silver | None |
| 522 Coral Belge | Bugull Red | Silver | None |
| 523 Vandryck Brown | Vandryck Brown | Silver | VincennesRed |
| 524 Raphael Green | Sevensley Green | Silver | None |

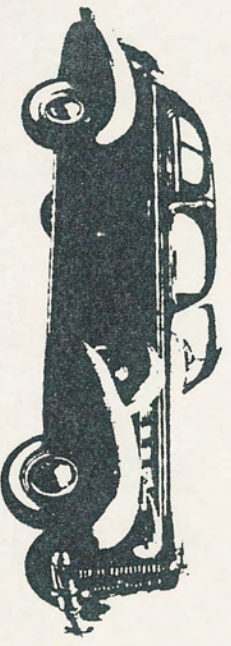
*Dante red wheel when red leather upholstery is used.

STANDARD ACCESSORIES INCLUDED IN LIST PRICE

- All Series—Bumpers and Bumper Guards, Spare Tire and Tube.
- Series 80-80-90—Electric Dash Watch, Chrome Wheel Rings, License Plate Frames, Flexible Steering Wheel and Special Gear Shift Knob.
- All 90 Series—8-Ply White Side Wall Tires.
- Models 40C, 48C, 60C, 88C and 80C—4-Ply White Side Wall Tires.
- All 90 Series and Model 81F—Rear Compartment Watch.

EXTRA GROUP ACCESSORIES (Series 40 Only)

| | List Price | |
|----------------------|------------|---------|
| Chrome Wheel Rings | 5-Wheel | \$22.00 |
| License Plate Frames | 6-Wheel | \$22.00 |
| Electric Dash Watch | | |



1938 Buick Century two-door touring sedan

1938



**PRICES
COLORS
EQUIPMENT
ACCESSORIES
TERMS**

Technical Research:

Paul Brennan #71
2343 W. Wrenner
Napa, N.C. 49855
906-226-8617
Technical Director